

**2.43% net p.a.\***

Annual Return Since Inception

**24.41% net\***

Cumulative Return

# Prime Value Enhanced Income Fund

Inception Date | 3 June 2014

## INVESTMENT OBJECTIVE & KEY FEATURES

The Fund aims to provide regular quarterly income with capital stability achieved through low volatility in the Fund's unit price over the medium-term.



**Regular income with quarterly distributions**



**Daily application/subscription and withdrawal/redemption**



**The Fund invests in debt securities that are "investment grade" or issued by an entity that is "investment grade"\*\* to mitigate risks and protect investors' capital over the medium-term**



**The Fund is consistently rated one of the top performing funds in the "enhanced cash" category in the Morningstar survey of 20 funds as featured in its monthly Yield Report publication**

\* Returns are calculated net of management fees assuming all distributions are re-invested as at 30/06/2023. Past performance is not indicative of future performance.

\*\* Investment grade is a bond rating that indicates that a bond has a relatively low risk of default.

## WHY INVEST IN THE PRIME VALUE ENHANCED INCOME FUND?

### Satisfactory Returns Compared To Saving Accounts And Term Deposits

Many investors are looking for a low-risk approach to investing with satisfactory returns, especially compared to savings account and term deposits. The Prime Value Enhanced Income Fund provides a way for investors to earn an income return that is comparable with other low-risk investment products such as Term Deposits and Savings Accounts offered by banks and other financial institutions.

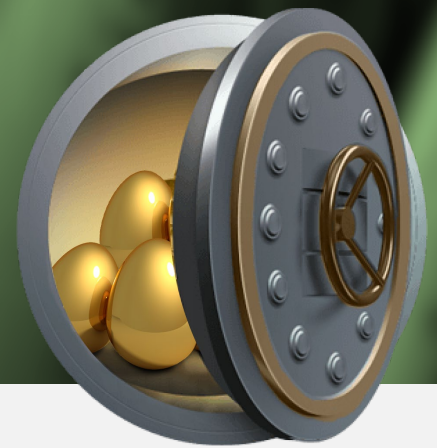
The Fund's portfolio consists predominately of 'floating rate' debt securities, so the Fund's return varies with movements in short-term money market rates and so benefits from rising interest rates.

### Capital Stability And Protection

The Prime Value Enhanced Income Fund allows investors to achieve capital stability over the medium-term.

The Fund offers an alternative way to invest in the Australian 'fixed income' and debt security markets which achieves a valuable diversification for investors next to other asset classes including equities and property.

**PROTECT  
INVESTORS'  
CAPITAL  
and  
pay regular  
distributions**



## WHAT IS THE ENHANCED INCOME FUND?



### Conservative Portfolio

The Fund's portfolio consists of 15-25 fully tradeable, registered debt securities. The vast majority of the securities are "investment grade". We only invest in A\$ securities, and there are no equities, property, mortgages or leases in the portfolio. The majority of the portfolio is invested in securities issued by the four major Australian banks.



### Significant Research and Ongoing Rigorous Monitoring

The Portfolio Manager and Investment Team place significant emphasis on ongoing monitoring and rigorous research of markets and all securities in the Fund's portfolio.

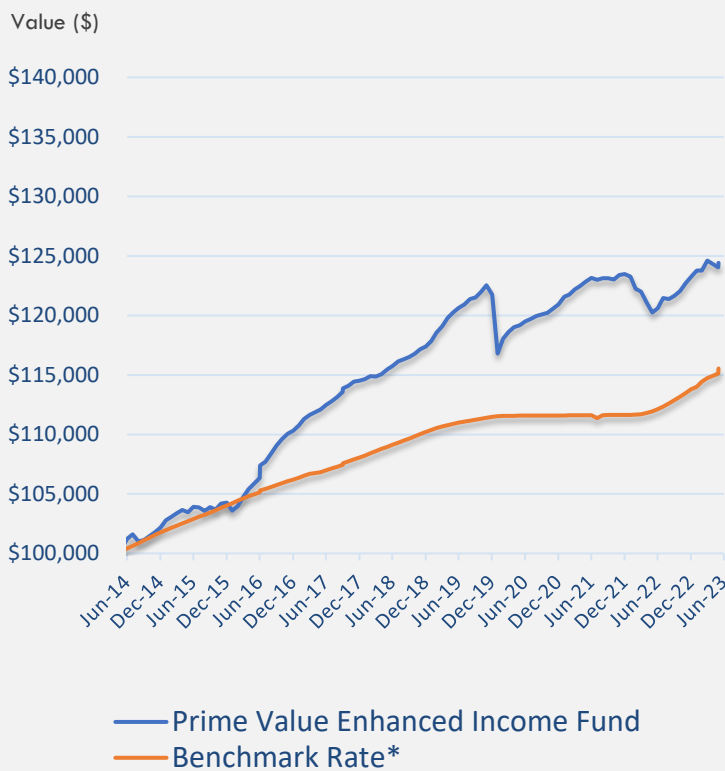


### A Philosophy of Capital Preservation

The fundamental emphasis on capital preservation defines Prime Value's singular investment culture. This Fund's goal is to invest in securities that optimise returns and minimise the risk of permanent capital loss for investors in the medium term.

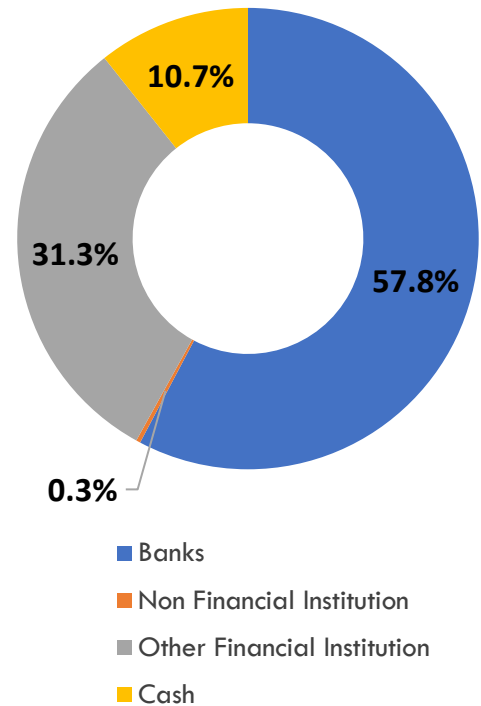
## FUND PERFORMANCE AND TRACK RECORD

	Net Return*	Net Return including Franking Credits**	90 Day Bank Bill Rate (BBSW)
Since inception (p.a.)	2.43%	2.84%	1.60%
5 Years (p.a.)	1.58%	1.83%	1.21%
3 Years (p.a.)	1.49%	1.58%	1.17%
1 Year (p.a.)	3.47%	3.47%	3.20%
3 Months	0.53%	0.53%	0.96%



This graph shows how \$100,000 invested at the Fund's inception has increased to **\$124,410** (net of fees). This compares with the return of the benchmark rate, where a \$100,000 investment would have increased to **\$115,530** over the same period.

## HOLDINGS BY SECTORS



## KEY FUND FACTS

Inception Date	3 June 2014
Benchmark	90-day BBSW rate
Distribution	Quarterly in cash or reinvestment options are available, generally paid within 5 business days after the end of the quarter.
Management Fee	0.60% p.a.
Performance Fee	Nil
Recommended Investment Period	1 + years
Application	Each business day
Withdrawal/Liquidity	Each business day
Minimum Investment	\$50,000
APIR Code	PVA0009AU



## PORTFOLIO MANAGER

**Matthew Lemke**  
Portfolio Manager



- **B Law (Hon), B Com (University of Melbourne)**
- **Fellow of FINSIA and Australian Corporate Treasury Association**
- **Harvard Finance Course (JP Morgan)**

- ✓ Over 40 years in global investment markets in London, New York, Singapore, Hong Kong, Sydney and Melbourne.
- ✓ Over 15 years experience in Australian bonds and income securities fund management.
- ✓ Over 15 years global securities, derivatives, financial risk control, M & A portfolio management experience.
- ✓ Qualified Finance Lawyer.
- ✓ Previously worked for J.P. Morgan and Deutsche Bank.

## PRIME VALUE ASSET MANAGEMENT

Prime Value is a multi-award-winning boutique Australian investment manager with an impressive history of building wealth with investors since 1998.

Since our inception 25 years ago, Prime Value has been known for its unique and intuitive investment approach that balances capital preservation and wealth creation.

Our investment philosophy is anchored on a strong risk management framework which has enabled us to target attractive opportunities and deliver a proven track record of superior performances.

Together with our sister company Shakespeare Property Group, we now manage in excess of \$3 billion on behalf of high-net-worth families, private investors, clients of financial planners and non-profit organisations, across four asset classes including:

- income securities and assets,
- equities,
- commercial properties, and
- alternative assets (agriculture farms, private equity, retirement living, healthcare property, and infrastructure assets).

Our highly qualified, experienced, and passionate investment team have successfully navigated with investors through many challenging market cycles and crises including the Asian Currency crisis, Global Financial Crisis, and the COVID-19 global pandemic.

Our strong track record has seen our clients consistently reinvest and grow with us.

## CONTACT US

### MELBOURNE VIC

Head Office - Prime Value House

Level 9,  
34 Queen Street  
MELBOURNE, VIC 3000  
+61 3 9098 8088

### SYDNEY NSW

Level 13,  
139 Macquarie Street  
SYDNEY, NSW 2000  
+61 2 8055 1965

### SUNSHINE COAST QLD

270 Ocean Drive,  
Sunshine Coast  
TWIN WATERS, QLD 4564  
+61 455 388 661

### SMITHTON TAS

113 Park Road  
TOGARI  
TAS 7330  
+61 3 9098 8088



Prime Value Asset Management Limited  
ACN 080 376 110 | AFSL No. 222055

info@primevalue.com.au  
primevalue.com.au

The information contained in this document is general in nature and has no regard to the specific investment objectives, financial or particular needs of any specific recipient. It is not intended to constitute investment advice or a personal securities recommendation. This document is not a Product Disclosure Statement (PDS) or an offer of units and contains a brief overview of the investment only. Any prospective investor wishing to make an investment in the Fund must obtain and read the relevant PDS (particularly the risk factors discussed) and complete an application form attached to the PDS. Neither Prime Value Asset Management Limited nor its associates or directors, nor any other person, guarantees the success of the Prime Value Funds, the repayment of capital or any particular rate of capital or income return, or makes any representation in relation to the personal taxation consequences of any investor's investment.